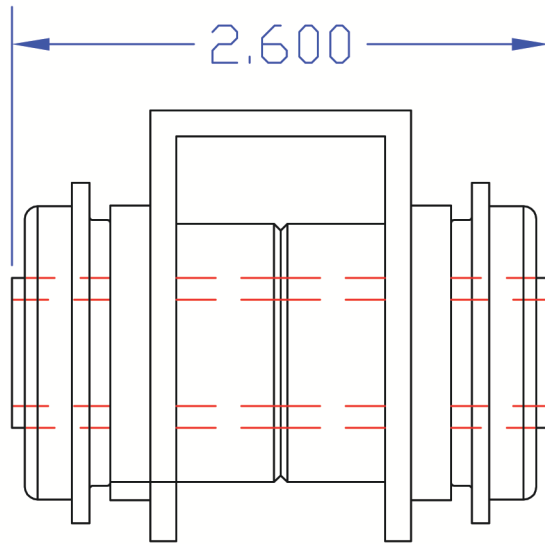


RP15608

INSTALLATION INSTRUCTIONS



NOTE: A GAP WILL EXIST BETWEEN THE FLANGE ON THE BUSHING AND THE ARM, THIS IS BECAUSE THE STEP ON THE BUSHING IS THE STOP AND NOT THE FLANGE. DO NOT OVER-PRESS.